


✦ Title-I Parent / Guardian
School Improvement
Meeting

December 8, 2023 @9 AM





Who to
Contact for SF
Programs?



Kaye LaGreca

Chief Academic Officer
Director of State & Federal Programs

klagreca@my.atafordpas.org

313.625.4690

Individual / Personal Questions ...



- ★ for privacy concerns, please do not reference a personal issue with your child and/or a specific teacher
 - Speak directly to the Principal
 - Email / Call Separately

Recap from Last Month ...

November Topics

- ESSER III ~ Learning Loss ~ Consultation
 - Social / Emotional
 - Academic Support
 - Staff Support
 - Literacy Curriculum
 - Literacy Initiatives



Agenda Items for Today



01

Feedback from Family
Game Night

02

Academic Supports &
[tutor.com](https://www.tutor.com)

03

Learning Loss &
Supplementary
Funding

04

School Index for 22-23
www.mischooldata.org



01

Feedback from Family Game Night



Survey Feedback on Needs / Wants for Family Engagement & Support

Information Tables / Workshops:

- Bullying
- Reading Workshop
- Math Workshop
- Healthy Eating / Physical Fitness
- Mental Health
- Support for Parents who do not Speak English

Activities to Address Learning Loss:

- Spelling Bee - School-Wide
- Quiz Bowl - All Subjects
- Book Club - Reading
- PenPals - Writing
- Movie Night w/ Theme

Please contact your child's PRINCIPAL about SCHOOL related Events / Activities:

- Band / Choir
- Sports
- Non-Academic Clubs
- Dances
- Talent Show

Family Game Night continued REVIEW ...



Communication!

BLASTS

Dojo
Email
Text
Phone

PRING

Backpack
Parking Lot
Posters

SOCIAL MEDIA

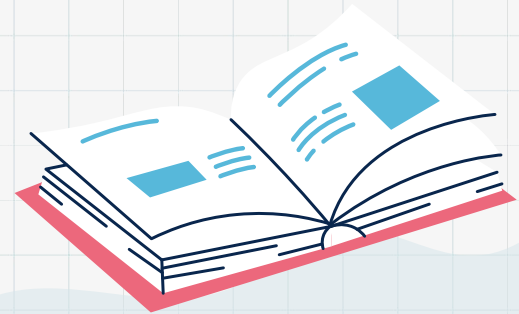
www.atafordpa.org
Facebook

Information requested on things we do offer: tutoring / after-school support for academics / scholarships / AP Classes ... how do we get the messages out better?



Academic Day Time Supports ...

- Classroom Small Groups / Differentiation
- Observations and Push-In Services
- Tier 3 Academic Supports through MTSS
- ELA Lab Class @ High School



03 Learning Loss



Discussion ... on reducing Learning Loss



ACADEMIC

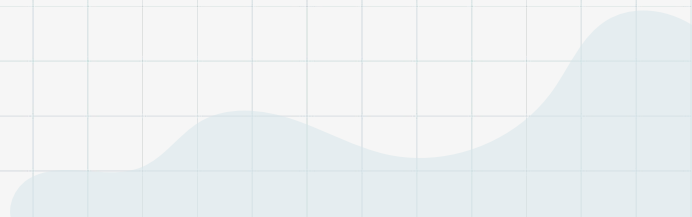
OTHER ...

- Social Work
 - Counseling
 - Physical Health
 - Mental Health
- 





- **WOULD YOU COME ON SATURDAY MORNINGS 9 - 12 PM?**
- **BEFORE SCHOOL @ 7:00 AM?**
- **AFTER SCHOOL @4:00 PM?**
- **AFTER SCHOOL @6:00 PM?**



04

ATA SCHOOL INDEX

www.mischooldata.org



Noteworthy Improvements

21-22

22-23

30	Student Growth	62
----	----------------	----

55	School Quality & Student Success	77
----	----------------------------------	----

27	English Learner Progress	60
----	--------------------------	----

21-22

22-23

16	Student Proficiency	22
----	---------------------	----

89	Graduation Rate	89
----	-----------------	----

37	Overall Index	56
----	---------------	----



Anonymous Feedback at Anytime!

